



VISTEARO



Welcome to Vistearo, the unique Silverleaf estate that embodies the essence of luxury and breathtaking beauty.

Situated on an elevated, five-acre hillside lot, this 11,362 square-foot Mediterranean masterpiece is an homage to the legendary Monaco Hotel of the same name and a tribute to the most extraordinary views Scottsdale has to offer.



Designed by renowned architect Scott Carson and brought to life with the exquisite interiors of Kristin Hazen, Vistearo is a private retreat that harmonizes effortlessly with the mountain behind it and celebrates unforgettable panoramic sunset vistas.

The Estate is mid-build, with all groundwork and framing complete. Its anticipated completion date is early fall 2025.



The magnificent driveway guides you to a dramatic owners garage with room for eight to sixteen vehicles. This lower level also offers indulgent amenities, including separate areas designed for an indoor golf driving simulator, a state-of-the-art movie theater, and a “Man Cave” perfect for billiards, pool, cards, or simply unwinding with friends.

Carved into the mountain, you will also find a wine cave—adding a touch of old-world elegance and charm to modern luxury.







The grand entrance opens onto a full-length patio and pool area, from which you can venture past the elegant groin ceilinged dining room into the galleried great room and kitchen.

The view from this incredible space seamlessly connect to a covered outdoor living area, extending your entertainment options to the poolside.

A private hallway from the great room leads past “her” office with views over the pool, culminating in the opulent Owner's Suite. This sanctuary offers unparalleled privacy with views on three sides, a private patio overlooking the pool, and a bridge connecting to the main outdoor living area.





The Upper Level, accessible via elevator or the grand staircase, features three additional bedrooms, a gallery overlooking the Great Room, and a full-size patio with yet more awe-inspiring views.

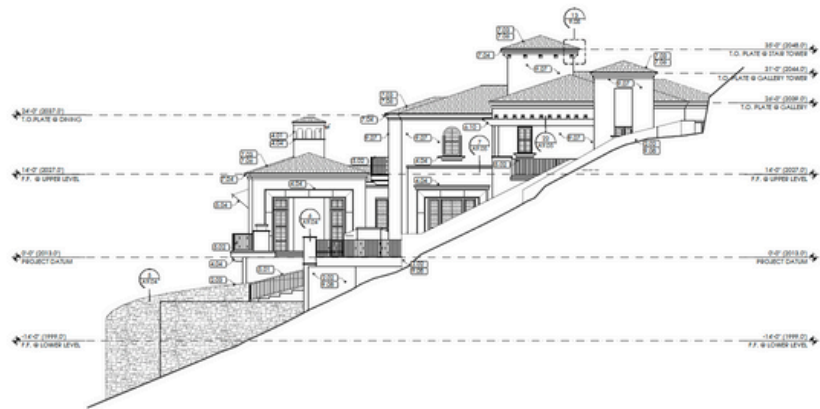
This level also houses “his” office, a family room, patio, and exercise room that opens directly to the mountainside, complete with a unique open-air space designed to help keep small pets safe from desert wildlife while they exercise alongside you.



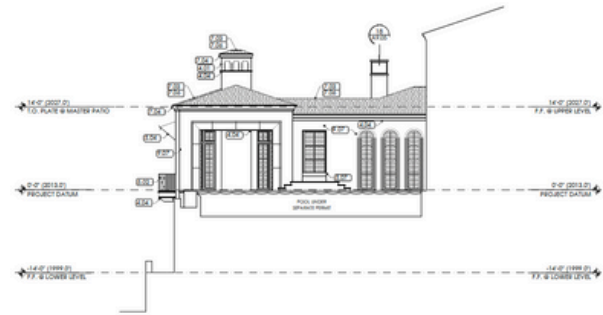
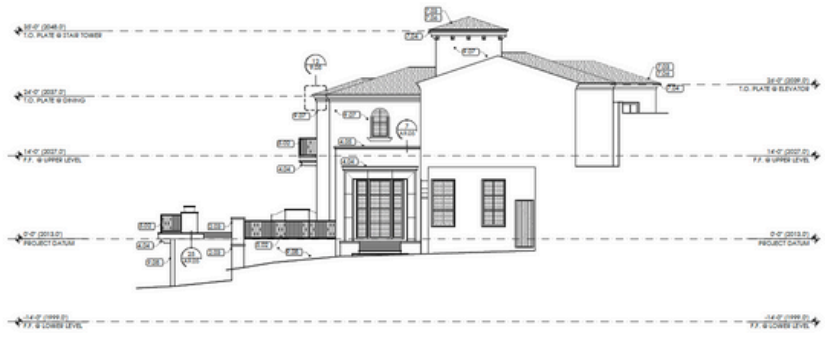


8 OVERALL NORTHEAST ELEVATION
SCALE: 1/8" = 1' - 0"

ELEVATION PLANS

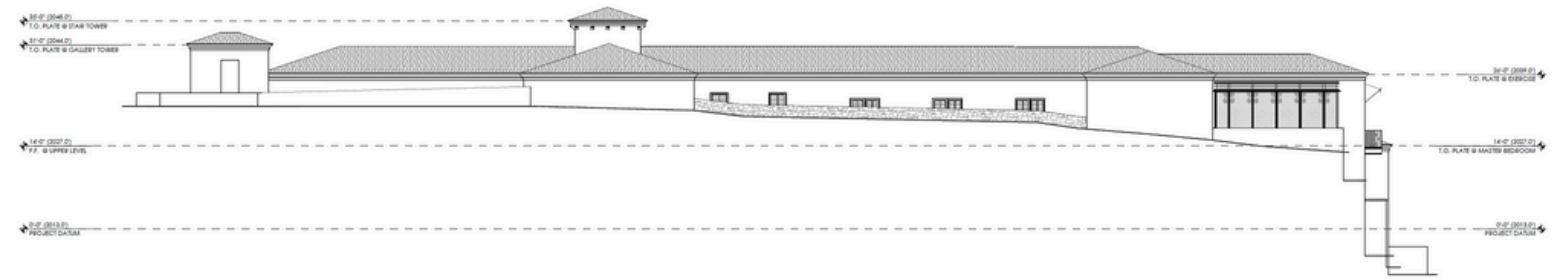


4 **NORTHEAST ELEVATION**
SCALE: 1/8" = 1'-0"



5 **SOUTH COURTYARD ELEVATION**
SCALE: 1/8" = 1'-0"

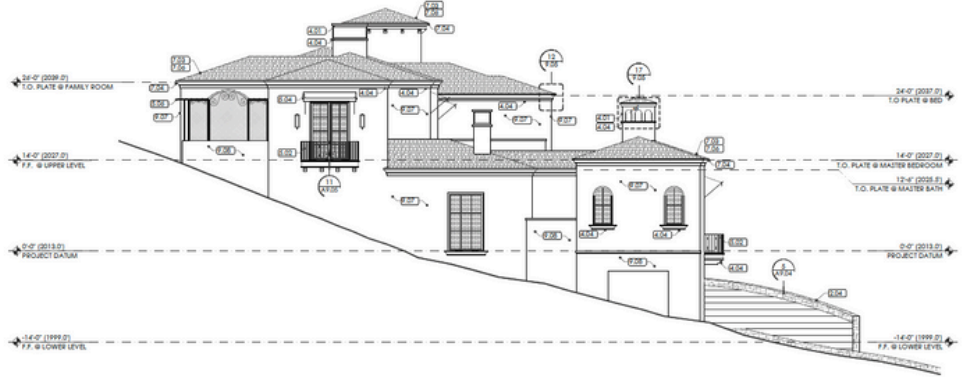
6 **SOUTH COURTYARD ELEVATION**
SCALE: 1/8" = 1'-0"



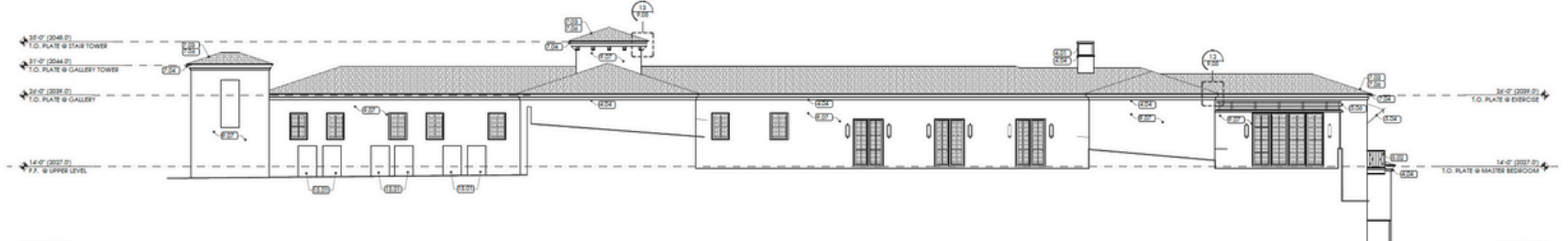
7 **SOUTHEAST OVERALL ELEVATION**
SCALE: 1/8" = 1'-0"

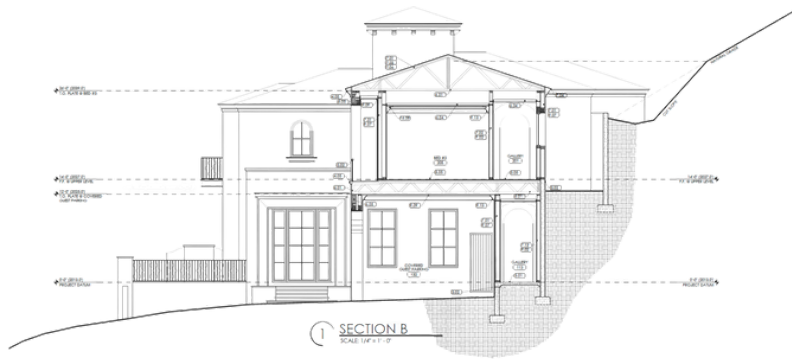


1 NORTHEAST ELEVATION
SCALE: 1/8" = 1' - 0"

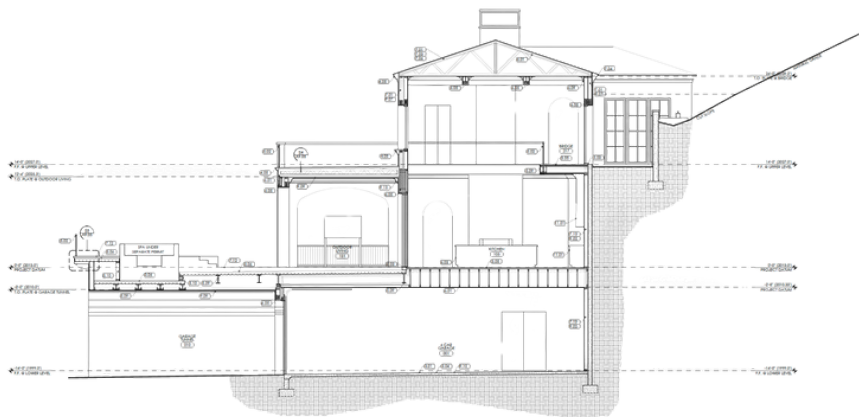


2 SOUTHWEST ELEVATION
SCALE: 1/8" = 1' - 0"

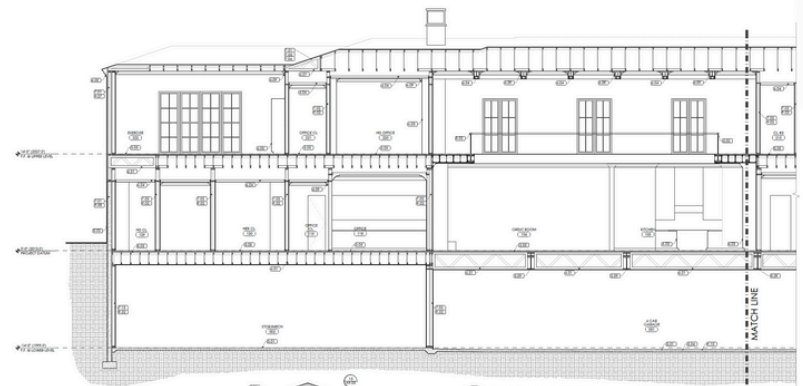




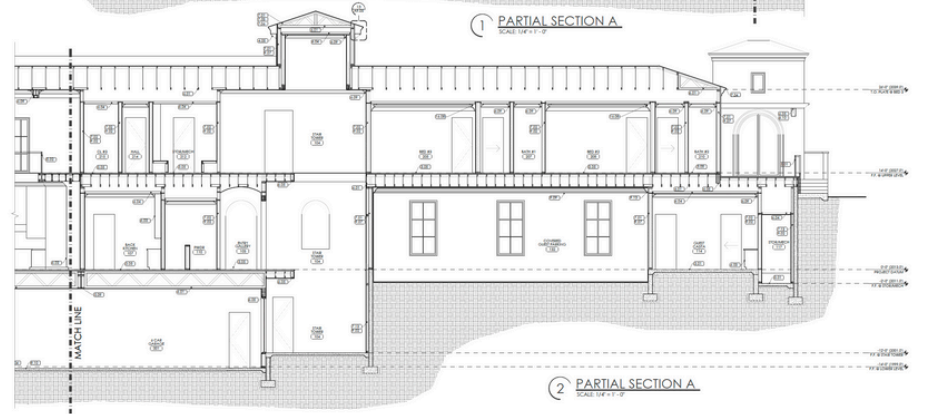
1 SECTION B
SCALE 1/4" = 1'-0"



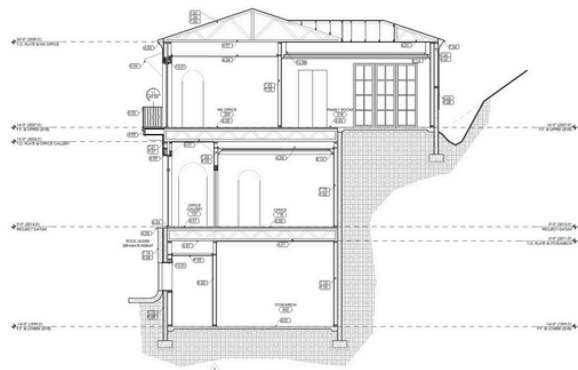
2 SECTION C
SCALE 1/4" = 1'-0"



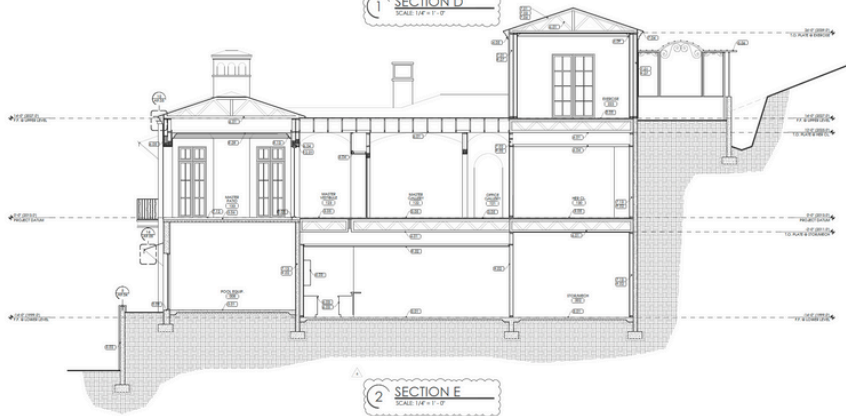
1 PARTIAL SECTION A
SCALE 1/4" = 1'-0"



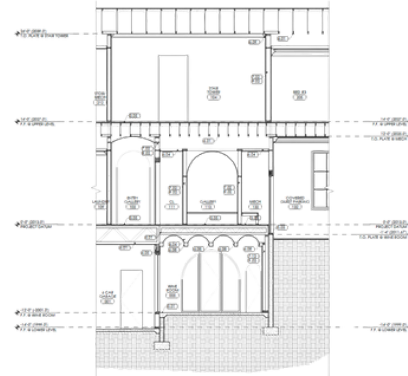
2 PARTIAL SECTION A
SCALE 1/4" = 1'-0"



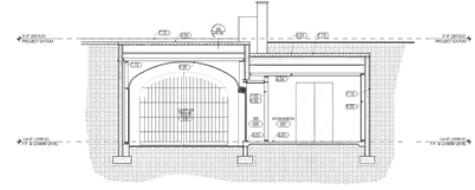
1 SECTION D
SCALE 1/4" = 1'-0"



2 SECTION E
SCALE 1/4" = 1'-0"



1 SECTION F
SCALE 1/4" = 1'-0"



2 SECTION G
SCALE 1/4" = 1'-0"



3 SECTION H
SCALE 1/4" = 1'-0"

INTERIOR DESIGN

With over 20 years in the design industry, Kristin and her team have been featured in multiple national publications, and have won industry awards such as an Iconic Top Designer and Winner of the Kitchen Design Contest in 2022. KHD has garnered a reputation in AZ and beyond for their purposeful and elegant interiors and their exceptional client experience.

Her creative juices first stemmed from her years as an accomplished pianist with plans to attend college as a music major. However, her deep love for the aesthetic of design was too high and ultimately led to her pursuing a career in interior architecture...But, bigger plans and the desire to craft her own unique journey led Kristin to strike out on her own in 2013, and she has been collaborating with her own amazing clients and the best builders and architects in the industry ever since. Thankful for her lifetime of passion for antique stores and flea markets, she looks to bring unexpectedly beautiful and unique pieces into each of her designs.

After studying a semester in London, she developed a passion for travel which has led to frequent trips abroad to discover unusual pieces with a profound history and repurpose them into beautiful charming objects in clients' interiors that become a fascinating part of their home's surroundings. As it is said, determination pays off; therefore, she has spent her career striving to bring the most bespoke designs to her clients. This dedication to the art of design has led to numerous design awards for her work and attention to detail.



Kristin Hazen of [Kristin Hazen Design](#)

ENTRY FOYER

Custom Pol. Nickel + Clear Glass Chandelier



CONCEPT PHOTOS

Marble Floor with Mosaic Accents



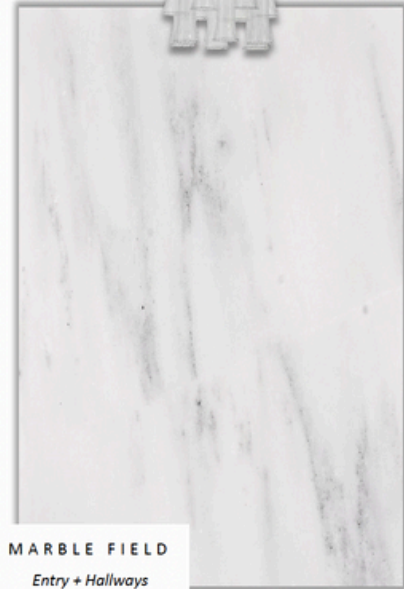
GALLERY HALLWAYS
Lantern Concept

UPSTAIRS NOOK

Concept



est. 2013
KH
// design



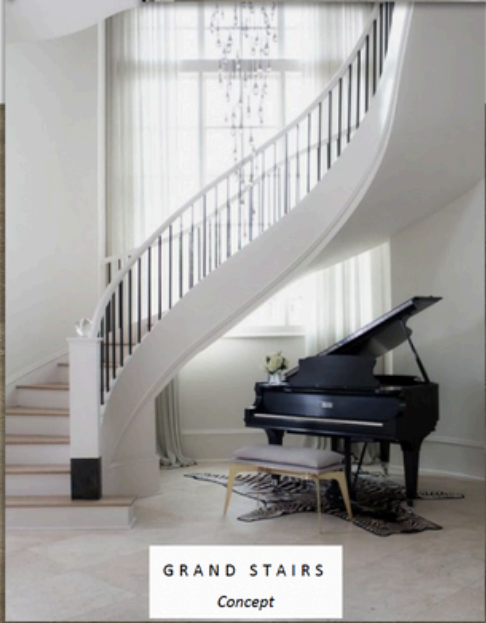
MARBLE FIELD
Entry + Hallways



BROKEN MOSAIC MARBLE
Entry Floor + Hallway Borders



WOOD FLOOR
Option 1 Shown



GRAND STAIRS
Concept

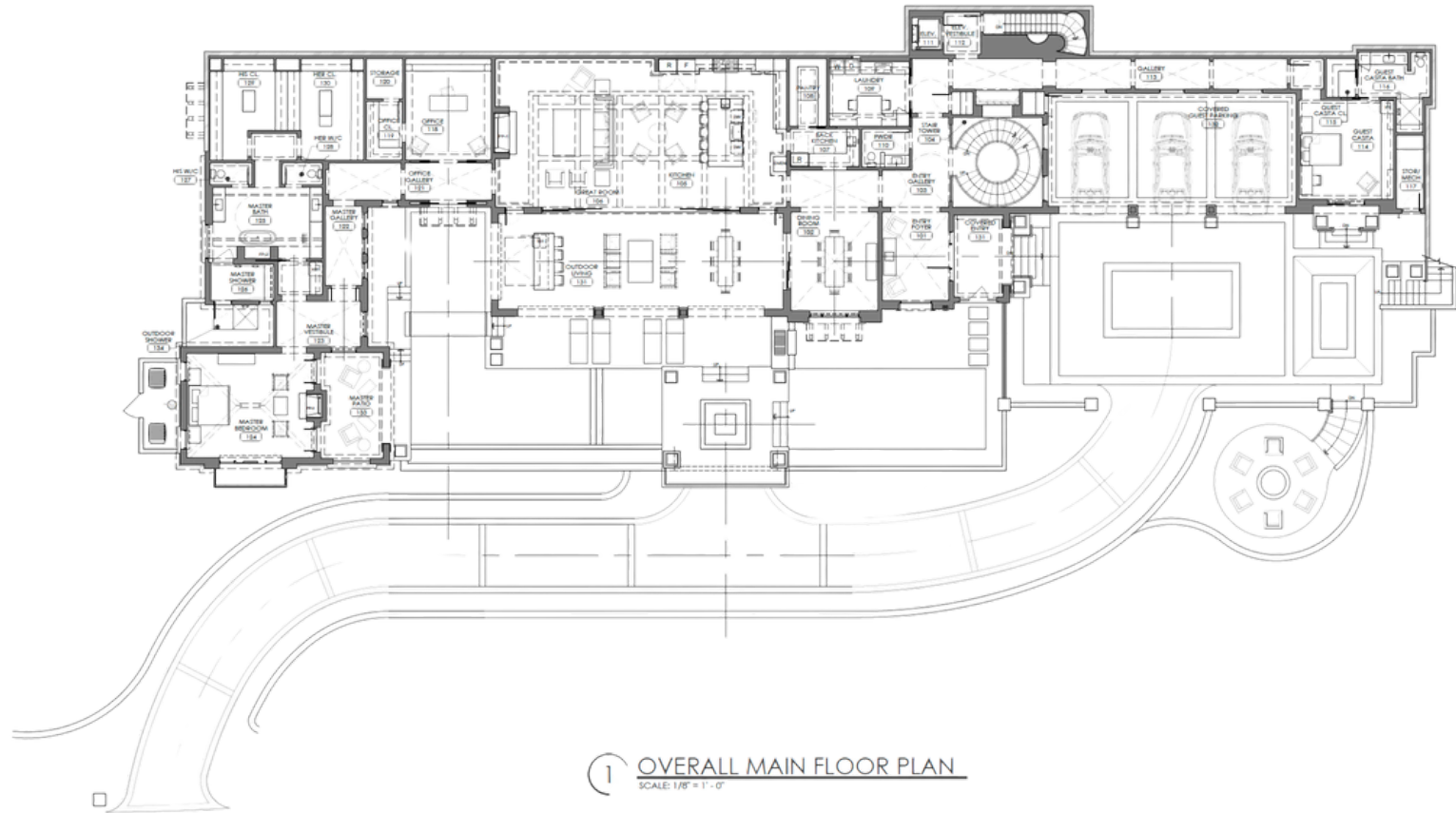
ENTRY | GALLERIES | STAIRS

ARCHITECT

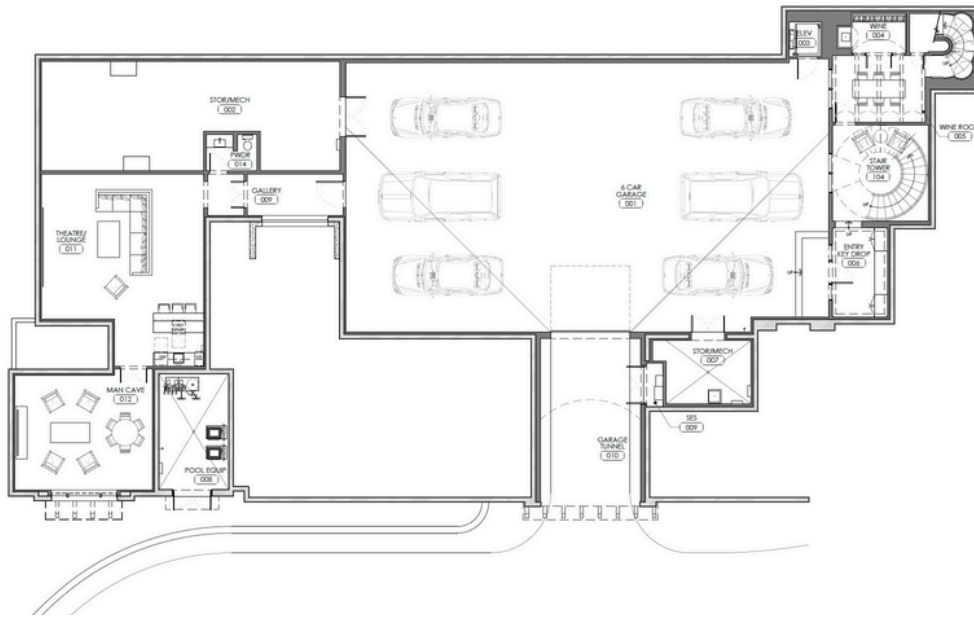
Scott Carson of Cosan Studios



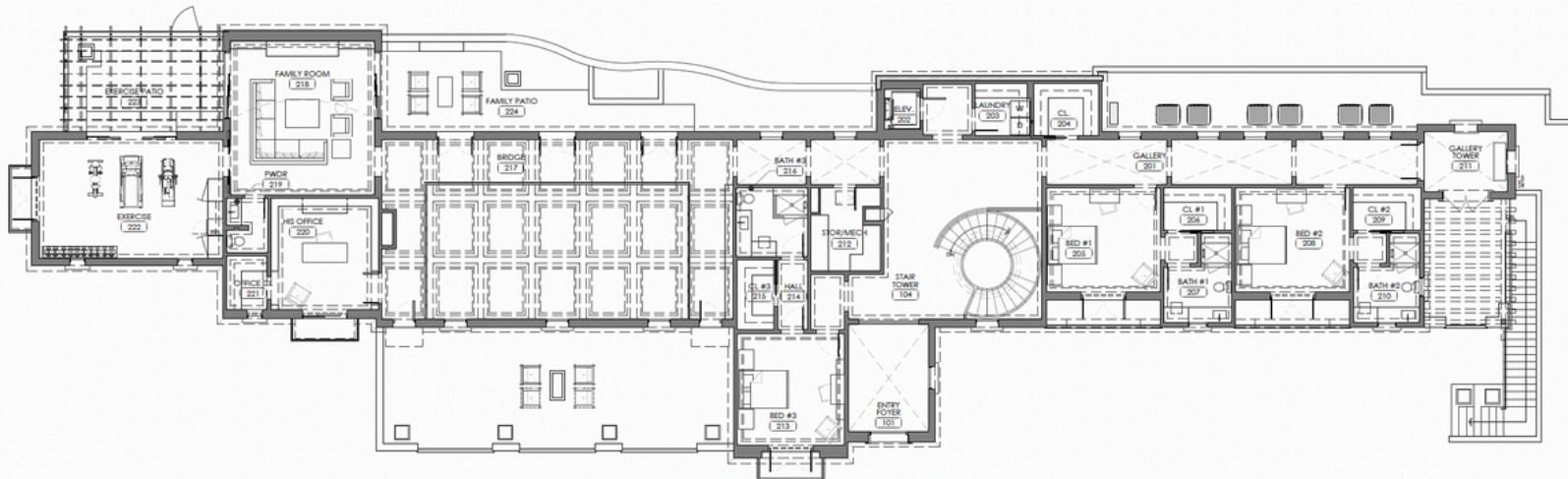
Scott Carson started Cosan Studio in 2019 after working 12+ years as a Principal at PHX Architecture. Scott started his architecture career working with the late George W. Christensen after obtaining his Master's Degree in Architecture from Arizona State University. His passion for design, collaboration, and the environment led him to start Cosan Studio with the rest of the team, who share a similar passion. Scott has been designing for 20+ years and many of his projects have graced the pages of local and national publications and have been the recipient of numerous awards. Scott is licensed in Arizona, Texas, Utah, Colorado, New York, and Tennessee.



FLOORPLANS



2 OVERALL LOWER FLOOR PLAN
SCALE: 1/8" = 1' - 0"



1 OVERALL UPPER FLOOR PLAN
SCALE: 1/8" = 1' - 0"



Silver|leaf





In the heart of North Scottsdale, Silverleaf is tucked into the canyons of the McDowell Mountains and surrounded by the McDowell Sonoran Preserve. The private club features a Tom Weiskopf designed, 18 hole championship golf course that winds along 7,322 yards of inspiring terrain.

The 50,000 square-foot Rural Mediterranean-style Silverleaf Clubhouse is highlighted by world class spa facilities, resort and lap pools, fully appointed men's and women's locker rooms, as well as fine and casual dining.



COMPASS

21137 N 102nd St